

---

EST. 1705

FETCHAM

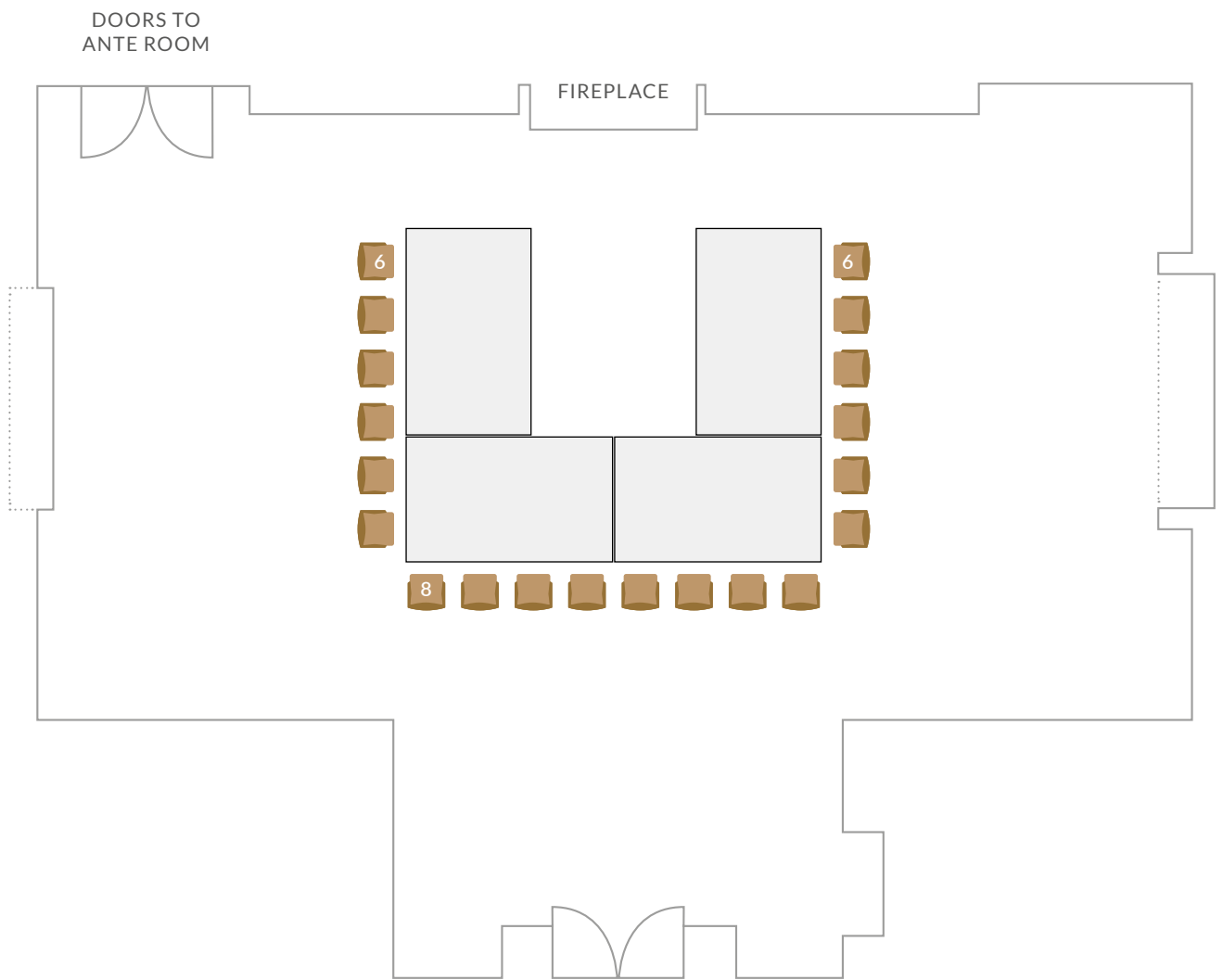
PARK

---

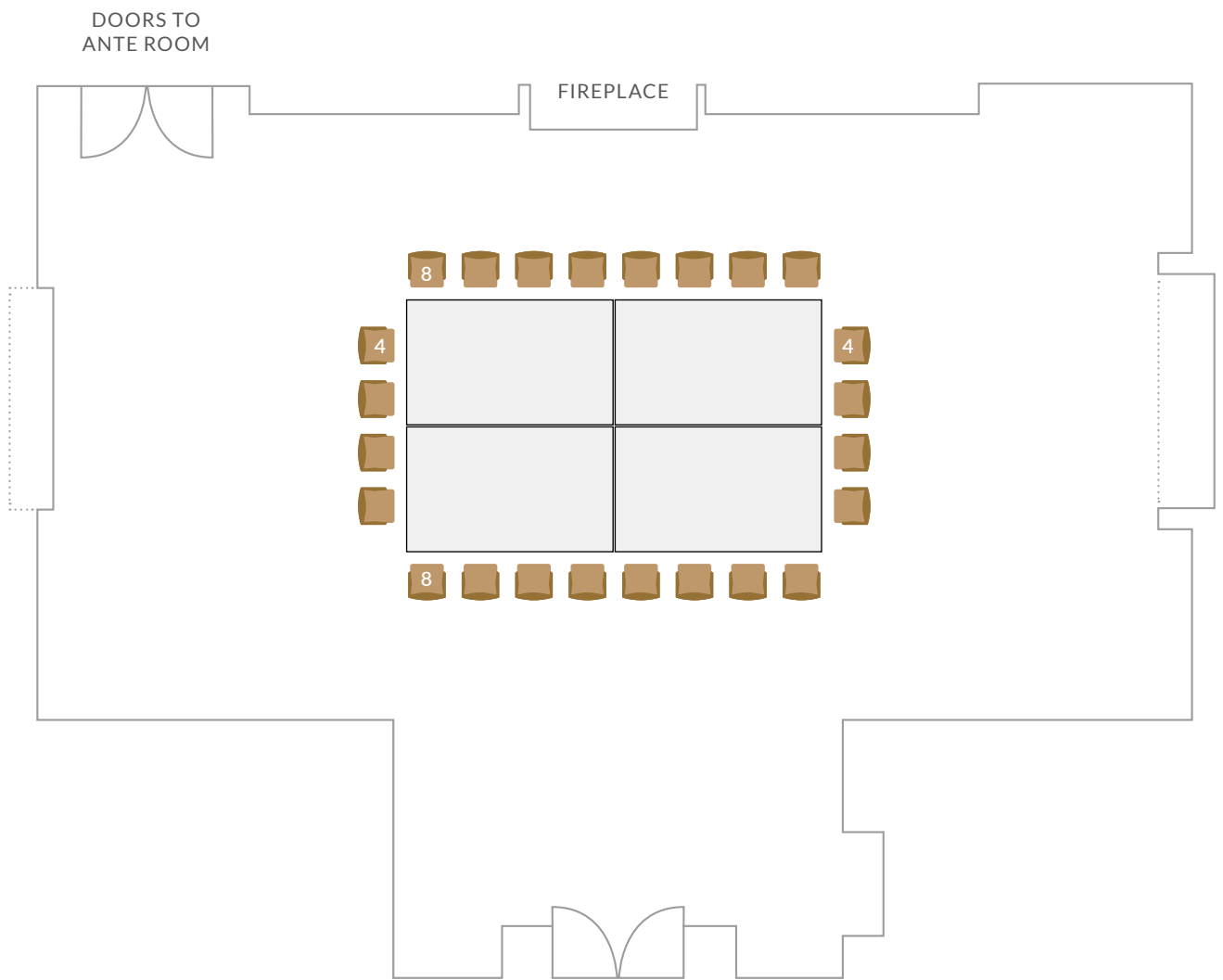
SEATING PLANS

---

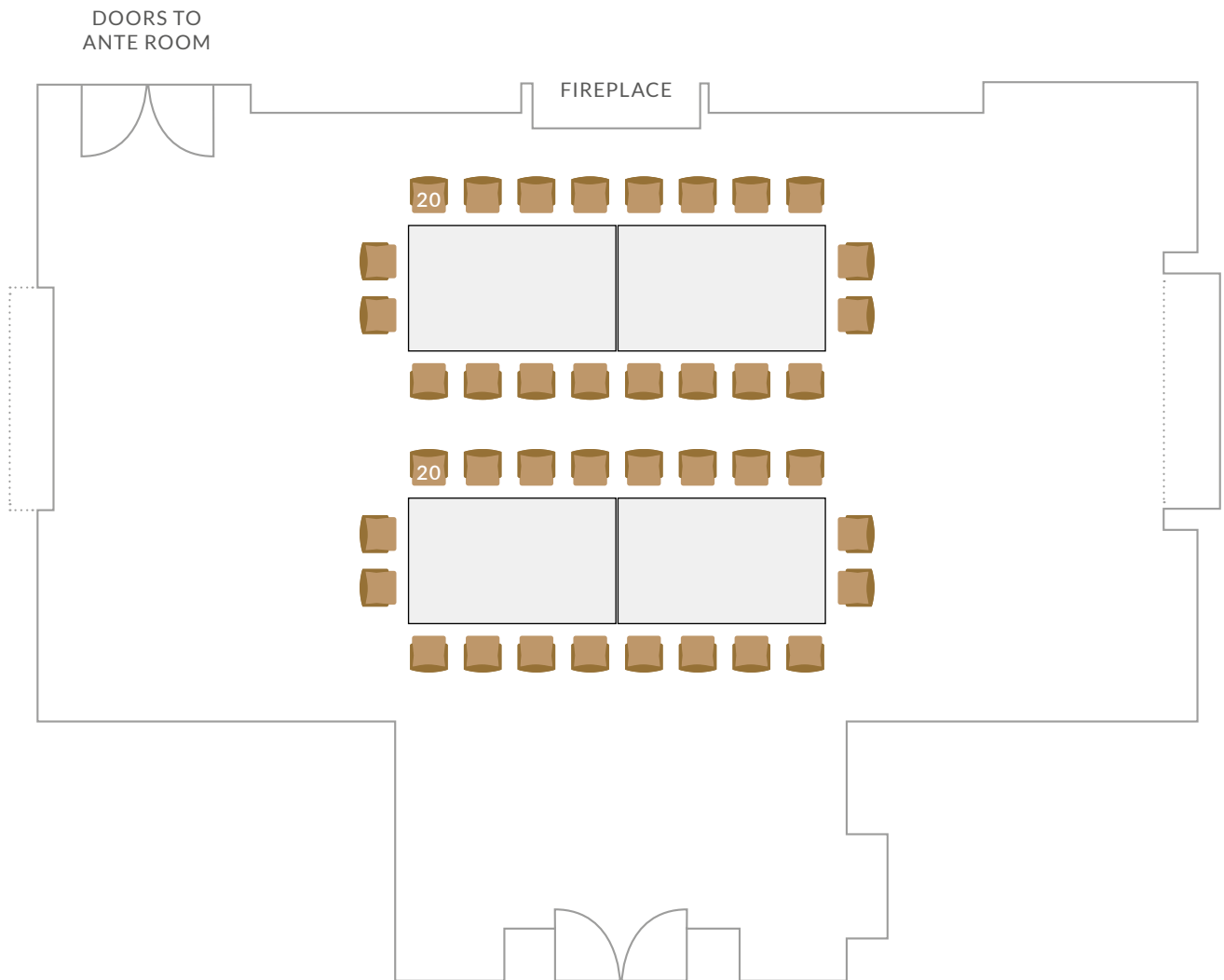
SEATING 20:  
6'6" x 4" RECTANGULAR TABLES



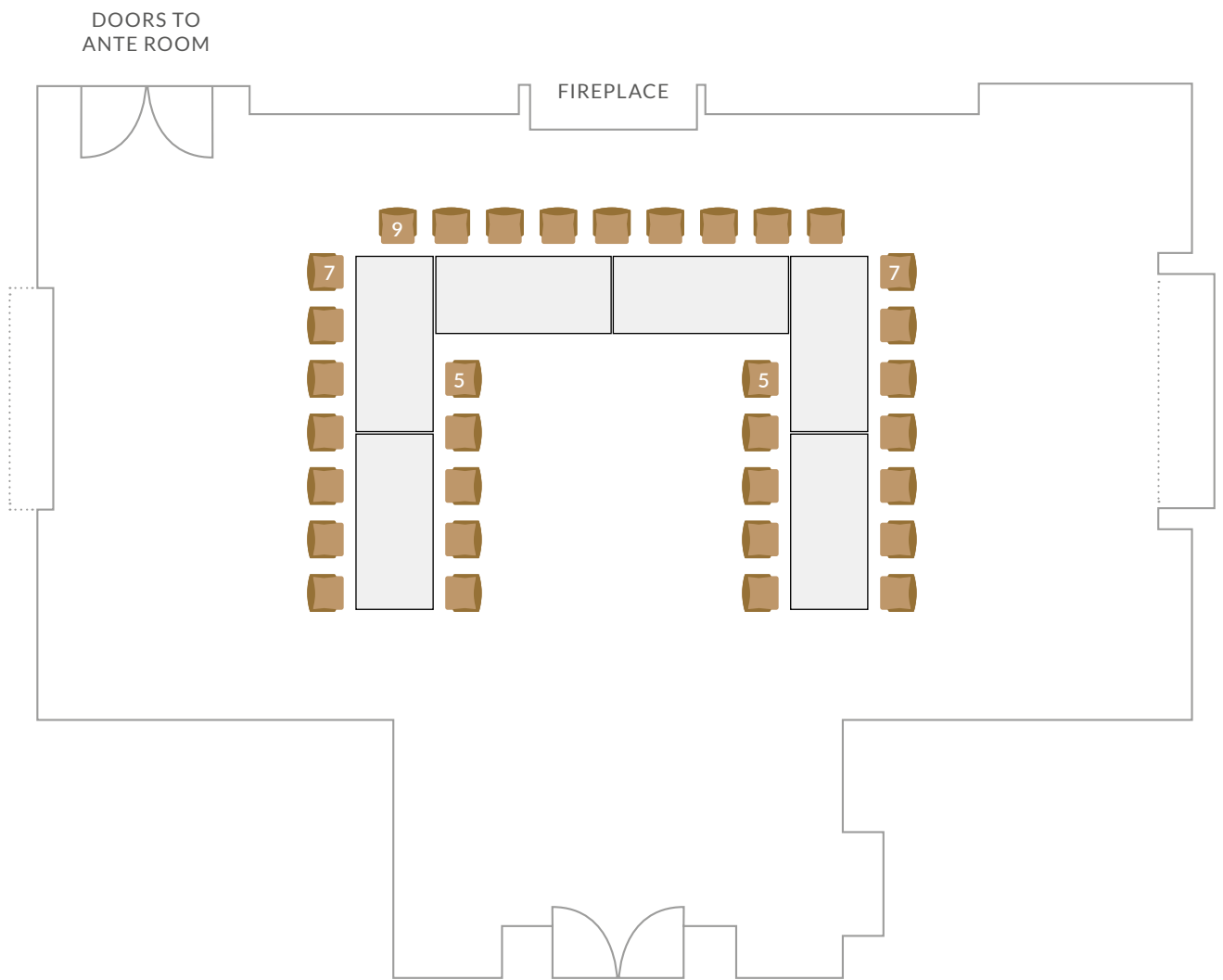
# SEATING 24: 6'6" x 4" RECTANGULAR TABLES



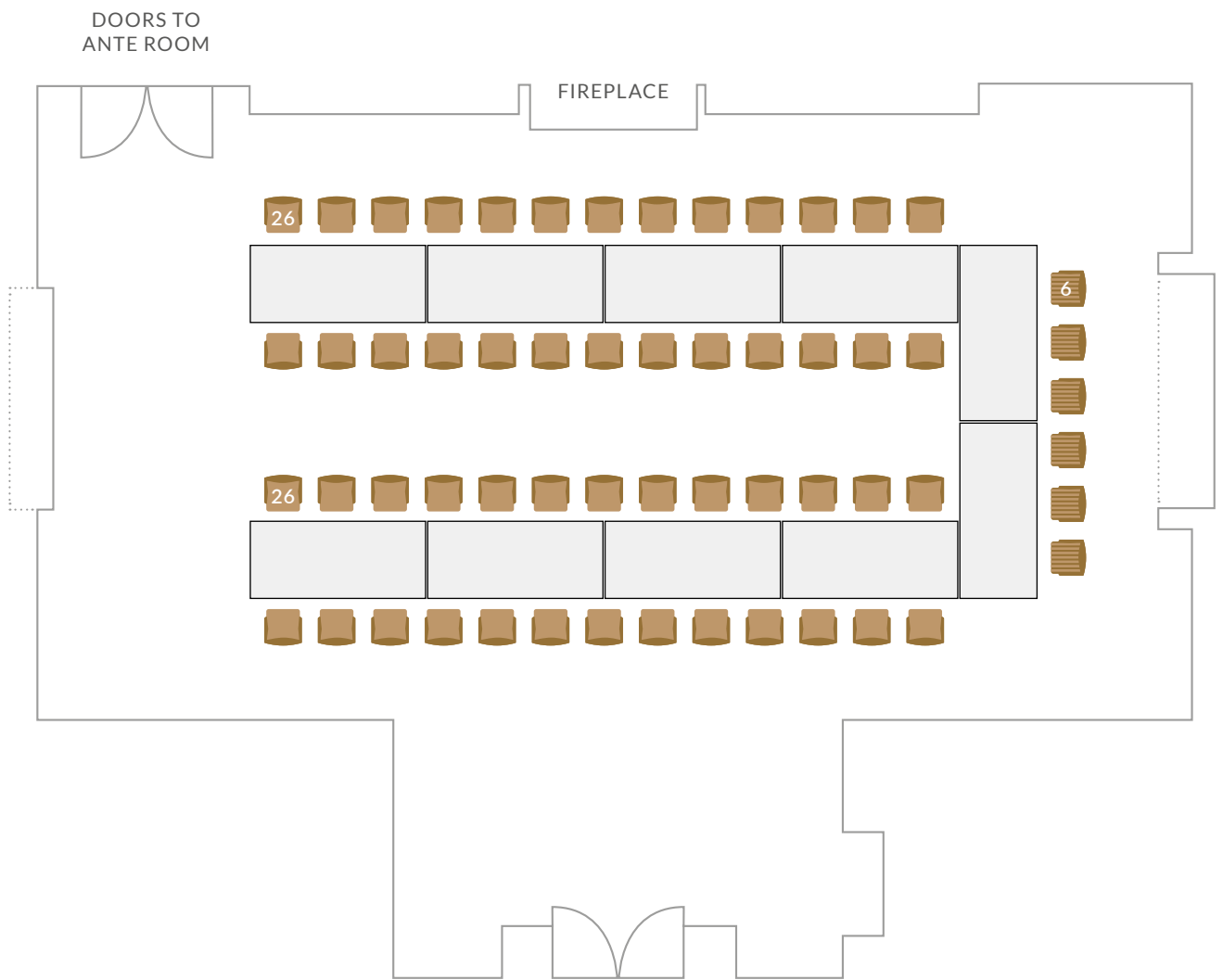
SEATING 40:  
6'6" x 4" RECTANGULAR TABLES



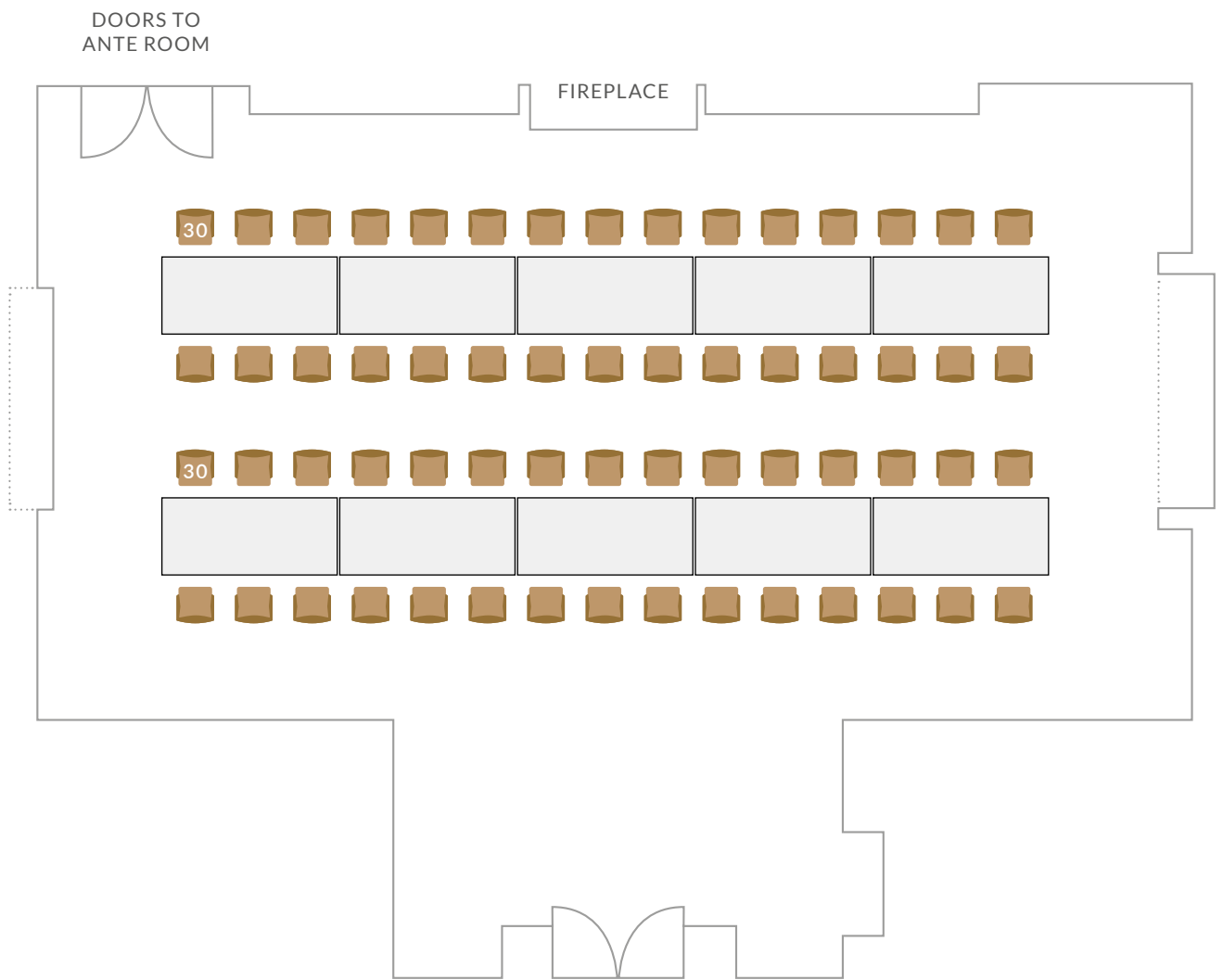
# SEATING 33: BANQUET STYLE



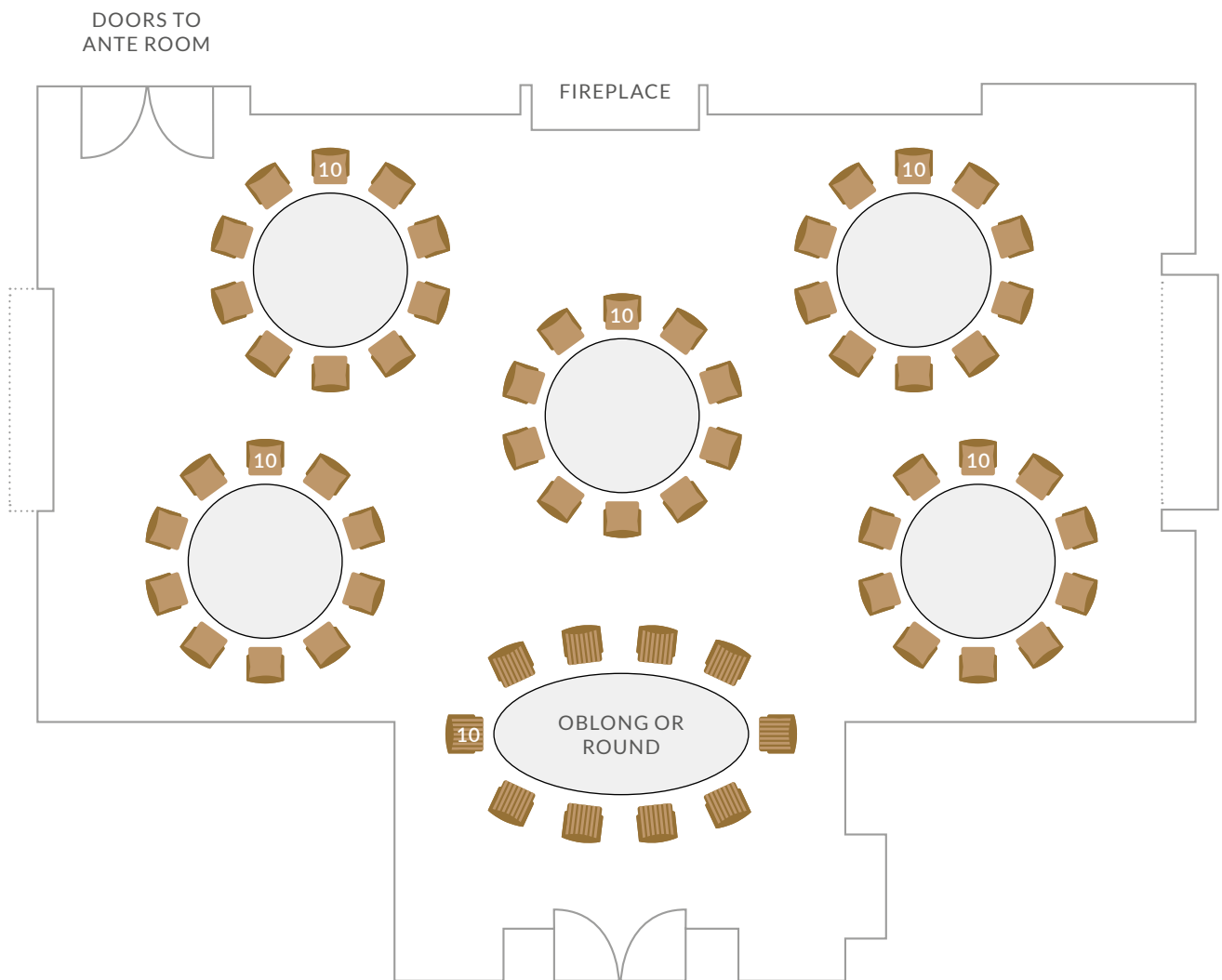
# SEATING 58: BANQUET STYLE



# SEATING 60: BANQUET STYLE

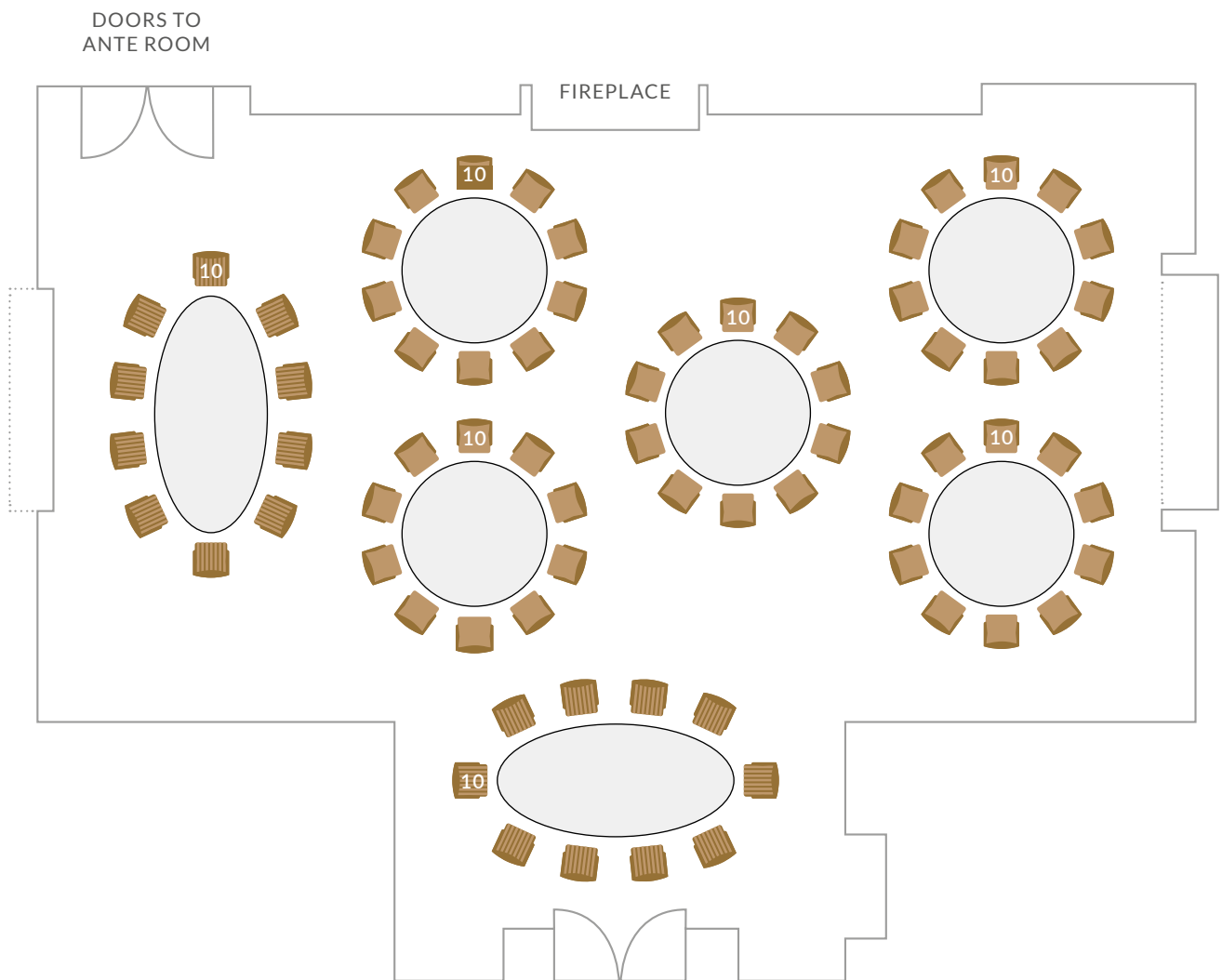


# SEATING 60: 5'6" ROUND TABLES & ROUND OR OBLONG TOP TABLE



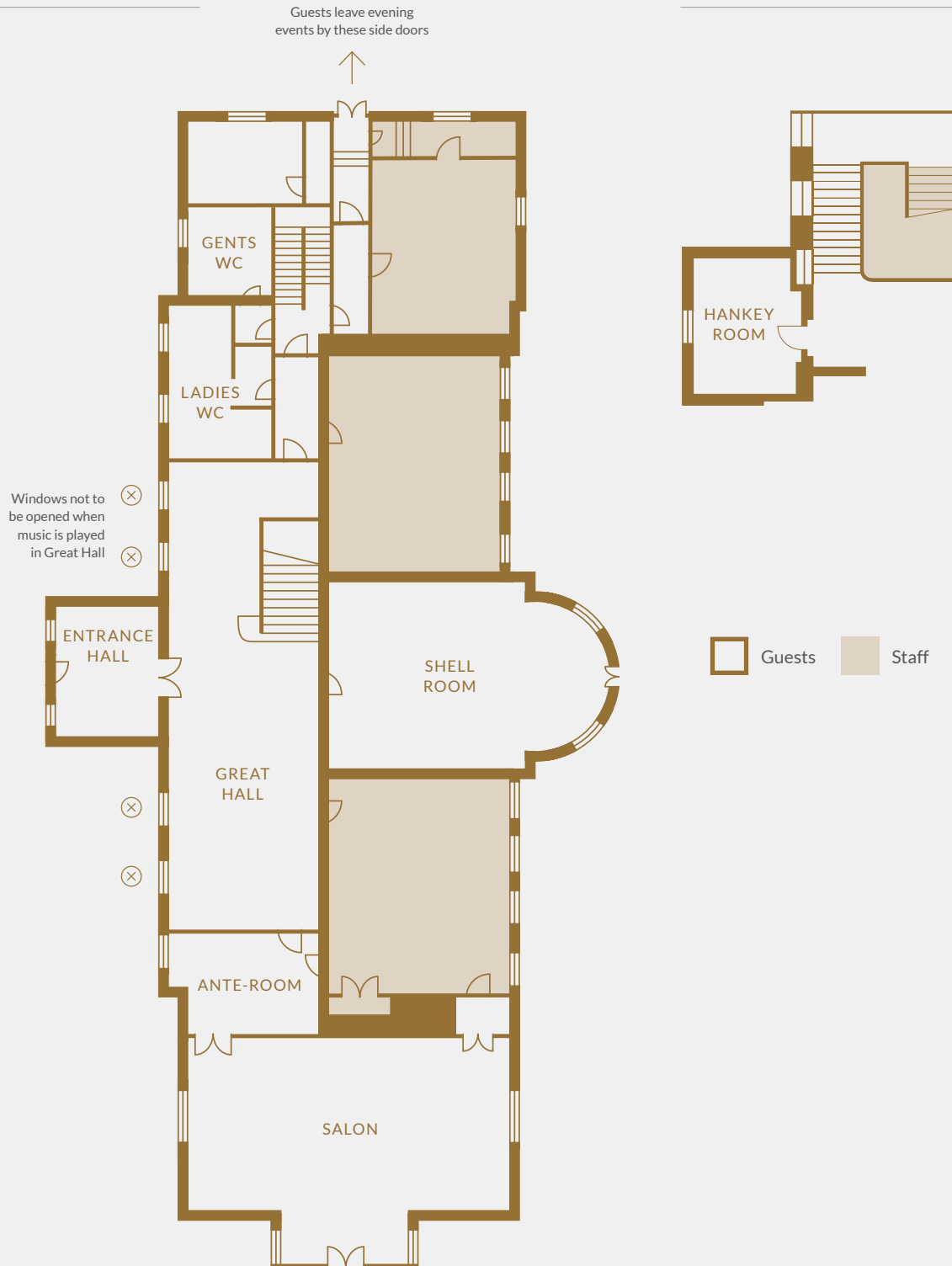


SEATING 70:  
5'6" ROUND TABLES & 2 OVAL TOP TABLES FOR DINING



GROUND FLOOR

FIRST FLOOR



FLOOR PLANS & CAPACITIES: MEETINGS, RECEPTIONS OR WEDDING CEREMONY

**Salon:**

Boardroom table for up to **30** people  
 Round tables for up to **70** people  
 Theatre style for up to **100** people  
 Standing room for up to **100** people  
 Ceremony for up to **110** guests\*

**The Hankey Room:**

Boardroom table for up to **6** people

**Shell Room:**

Boardroom table for up to **12** people  
 Dining for up to **30** people  
 Standing room for up to **50** people  
 Ceremony for up to **50** guests\*

**Great Hall:**

Drinks reception for **60-100** people  
 Ceremony for up to **100** guests\*

**Total Maximum Capacity for the Salon, Shell Room and Great Hall is 150 standing**

**\*Bride and Groom plus 2 Registrars are not counted as guests**