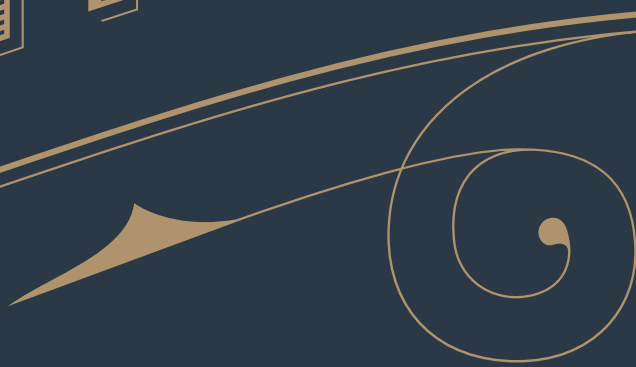


FETCHAM





|

*Where modern  
businesses get  
the flexibility they  
need to thrive*

|



# OFFICES

## *Flexible* & FOCUSED

The latest technology lets you work just about anywhere.  
That doesn't mean just anywhere will do.

Offices at Fetcham Park are flexible and professional. We'll tailor your office to suit your brand, your budget, and the way you like to work. You can just plug and play, with no capital investment or long-term commitment.

At the same time, our offices meet the highest standards. They're private, distraction-free spaces in an historic setting, equipped with everything you need to maximise efficiency, from innovative IT to designer ergonomic furnishings.



---

## CHOOSE FETCHAM PARK OFFICES FOR:

---



### *A single monthly fee*

with no hidden charges



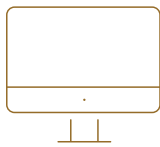
### *Flexible terms*

with space that scales  
as required



### *Designer furnishings*

from award-winning Konzept  
and Hermann Miller



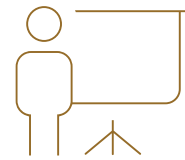
### *Enterprise-grade IT*

and VoIP with on-site support



### *Client services*

including telephone answering  
and mail handling



### *On-site meeting rooms*

and event spaces with  
event management



### *Regular events*

and training as part of our  
business community



### *Catering facilities*

and Nespresso coffee machines  
on every floor



### *Informal TV lounge*

where you can work or take a break  
in a relaxed setting

---

What's more, we'll build a productive relationship with your business to support you as you work.  
It's flexible workspace that doesn't ask you to be flexible on your standards.



# *Telephony*

## & INNOVATIVE TECHNOLOGY

At Fetcham Park, we've retained tradition but added the latest technology. Our IP telephony system is based on the industry-leading Avaya Aura platform.

With powerful iOS and Android apps, you can integrate your desk phone and your mobile phone into a seamless telephony platform. You can use a single number whether you're in the office, at home, or on the move - and even bring your existing phone number with you.

In addition, our end-to-end fibre gigabit internet circuit delivers outstanding upload and download speeds, all protected by a service level agreement that guarantees consistent performance.



# *Style* & SUPPORT

Step into one of our offices – they're stylish spaces that speak for themselves. However, since we've been in this business for more than 20 years, we know it takes more than style to make things work.

That's why we put supportive relationships at the centre of everything we do.

When you move into an office at Fetcham Park, you get more than a room to work in. You get the simplicity of a single agreement on your own flexible terms, the freedom to expand or downsize as business dictates, and an extended team to call your own, from our friendly Client Service Representatives to gardeners and technical support.

This means that you can put all your energy into pushing your business forward, while we keep your office up-and-running.







# VIRTUAL OFFICES

## *Impressive* & INSTANT

Fetcham Park is a luxurious location for your brand.  
However, you don't have to be here to take advantage of it.

With Virtual Offices at Fetcham Park, you can elevate your profile with our business address and a dedicated phone number. Bring our historic reputation to your stationery, without the cost of physical space. Give your business a personal point of contact with our telephone answering, ensuring you're only ever just a call away - even if you work from home or on the move.

It's not just a way to look more professional.  
It's a way to align your business with something truly prestigious.

---

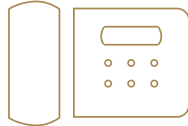
CHOOSE FETCHAM PARK VIRTUAL OFFICES FOR:

---



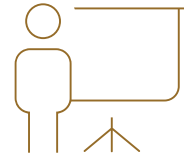
*A prestige  
business address*

in our unbranded  
business centre



*Telephone  
answering*

and mail handling



*Meeting  
space*

with a choice of prestigious rooms  
at preferential rates



*Client services*

to represent your  
business on-site



*Regular events*

and training as part of our  
business community

---

*Trusted*

& WELL-EQUIPPED

A virtual office gives you the advantage of our respected address and a point of contact that builds customer confidence and trust.

At the same time, we're here to support you with tailored, personal services to make your virtual office as productive as your physical one.

## TELEPHONE ANSWERING

---

Let us look after your calls while you put your energy into your business.

We'll answer the telephone in your company name and transfer callers to your number, so you make the best first impression on clients and colleagues. It's a welcoming point of contact that shows your customers you're always just a phone call away.

---

## TELEPHONE AND MAIL FORWARDING

---

There's no need to sit by the phone or wait in for that important delivery.

Instead, leave us to take care of it. We'll automatically redirect incoming calls to your number and receive your incoming mail, so your customers can reach you at our iconic location. Even if you're not there yourself.

---

## MAIL FORWARDING ONLY

---

If you run your business from home or on the move, don't let that affect your reputation.

Fetcham Park can be your prestigious point of contact for clients and colleagues, with your mail forwarded to your address or held for collection. So you can use our address - without being at our address all the time.

---

## OFFICES AND MEETING ROOMS

---

Set the right tone for your meetings, or get private, productive space to work in.

When it's time to go hands-on or meet face-to-face, our choice of stylish offices and meeting facilities are ready and waiting. What's more, our existing virtual office clients get preferential rates on our flexible space.



# MEETINGS & EVENTS

## *Distinguished* DECISION-MAKING

From team meetings to workshops and seminars,  
the right surroundings make all the difference.

With Meetings and Events at Fetcham Park, you can entertain clients at an iconic Grade II\* property, where history and modern business sit side-by-side. We'll give you the space to suit your occasion, from a single room to the entire ground floor. We can even tailor our services and stationery to fit with your requirements.

Whatever we can do to help, we're ready.

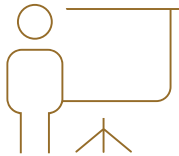
All for just as long as you need, from as little as an hour, just two miles from the M25 with excellent access by road or public transport.



---

CHOOSE FETCHAM PARK FOR:

---



*Meetings*

in the most unique and  
inspirational surroundings



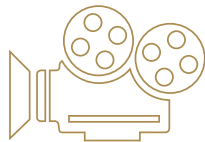
*Room layouts*

to match the purpose  
of your meeting



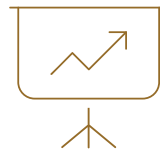
*Business-grade WiFi*

across the property



*LCD projector*

and screen, available on demand



*A flipchart and pens*

plus stationery, notepads,  
and pens for note-taking

# *Breathtaking*

## BRAINSTORMS & MEETINGS

Maybe you need a simple room for two people to have a discussion. Perhaps you're looking for something a little larger – say, a canapé reception for 130 people. Whatever you need, we've got the perfect space for you for however long you need it.

We're here to support your business, so we'll take care of everything. We'll tailor the room's layout to suit your event or, if more planning is required, just call on our experienced event management team to help you with everything from invitations to transport.

All this means that you can concentrate on what really matters to your business  
– making sure your meeting is a successful one.

# *Remarkable*

## & AFFORDABLE

With our meeting and events space, you can get as much space as you need, with essential services like catering and event planning.

There's no need to pay for a permanent meeting room that you don't regularly use, just book one of our rooms on a half-day or daily basis.

Contact us to get a quote to match your business needs.

# *Prestige*

## & PRACTICALITY

Two miles from the M25 Junction Nine. 25 minutes from Heathrow and Gatwick airports. Five minutes from Leatherhead town centre with fast rail links to London.

There's a lot that's practical about Fetcham Park, but it's a place that's about more than functionality.

Fetcham Park is a spectacular Grade II\* listed house, where a luxurious character is skilfully met with considered contemporary design. Where peaceful landscaped grounds keep you inspired and practical technology together with a focused team keeps you productive.

Across contemporary offices, spectacular meeting rooms and virtual offices, our mission remains absolute: to help you do business with practical space and support in an inspiring setting.

# *Historic*

## & CUTTING-EDGE

Fetcham Park is a house rooted in history, where you can explore gardens originally landscaped by George London and work under the gaze of murals by renowned 16th Century artist, Louis Laguerre.

While the house dates back to 1705 and has a wealth of history behind it, it's equipped with everything modern businesses need. Today, Fetcham Park is a much loved, privately owned and maintained building that's always moving forwards with a focus on delivering the best services to business.

It's in our technology – the latest IT and telephony throughout the entire site. It's in our design – a minimalist style with sleek lighting and Hermann Miller chairs – and our supportive attitude – all developed to give you the flexibility it takes to stay competitive.

# *Calming*

& CONVENIENT

Fetcham Park is a tranquil space away from the city.  
But its location keeps you connected to the world of business.

## *Leatherhead*

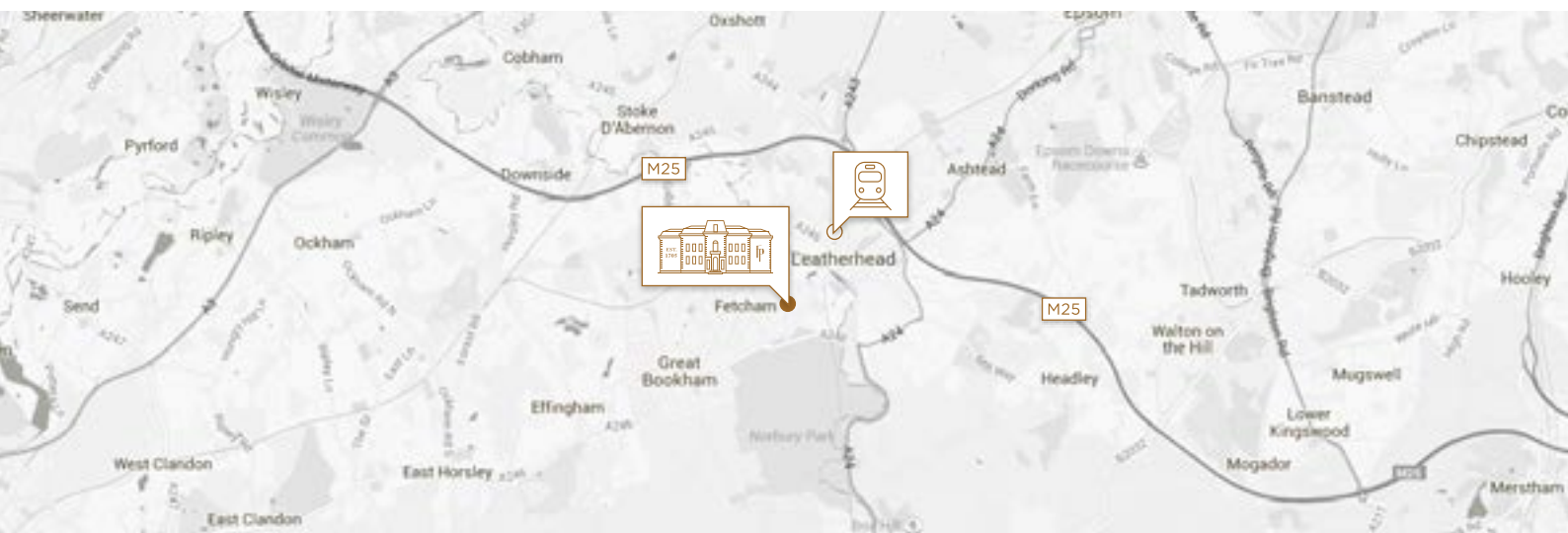
The historic market town and gateway to the Surrey Hills  
is just five minutes down the road.

## *London*


In easy reach via the nearby M25, or in less than 45 minutes  
from Leatherhead town centre by train.

## *Heathrow & Gatwick Airports*

Both less than 25 minutes away by car.







*Your home from  
home awaits...  
we look forward  
to welcoming you*



# *Let's speak*

ABOUT YOUR BUSINESS

We're here to give you the space and support you need,  
so please get in touch and tell us what we can do for you.



Telephone

+44 (0) 1372 371 000



Email

[hello@fetchampark.co.uk](mailto:hello@fetchampark.co.uk)



Address

Fetcham Park, Lower Road,  
Fetcham, Surrey KT22 9HD



[www.fetchampark.co.uk](http://www.fetchampark.co.uk)